



The power behind competitiveness

Delta RPI-Home Series

Grid PV Inverter

RPI H3A / H4A / H5A



Product Features

- Transformerless design
- Dual MPP Trackers
- Fanless design enhancing product life
- Wide voltage range
- Peak efficiency 97.5%
- Optional wifi / ethernet
- LCD display
- Aluminum die-cast enclosure
- IP65 protection level
- Easy installation
- Wall mountable



Delta RPI Home Series

Grid PV Inverter

RPI H3A / H4A / H5A

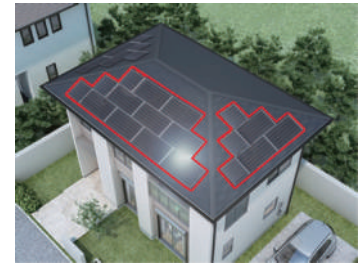
High Quality Protection Design

RPI-Home series is designed with IP65 protection level and fast connector features to enhance the performance under outdoor environment.



High Efficiency Performance

Dual MPP Trackers give more flexibility to PV system with multiple strings facing different angles & perform maximum yields with highest efficiency up to 97.5%.



Delta RPI-Home Series Product Specs

Model		RPI H3A	RPI H4A	RPI H5A
DC Input	Max. input voltage	550V	550V	550V
	Operating voltage range	100~550V	100~550V	100~550V
	MPP voltage range	160~500V	180~500V	220~500V
	Start voltage	100V	100V	100V
	Rated voltage	350V	350V	350V
	Max. input current	Each MPPT:10A Total 20A	Each MPPT:12A Total 24A	Each MPPT:12A Total 24A
	MPP tracker	2	2	2
	Connection type	2 pairs MC4	2 pairs MC4	2 pairs MC4
AC Output	Max. output power	3000VA	4000VA	5000VA
	Max. output current	13.9A	18.2A	23.2A
	Rated voltage	230V	230V	230V
	Operating voltage range	-20% / +22%	-20% / +22%	-20% / +22%
	Operating frequency range	50/60Hz ±5Hz	50/60Hz ±5Hz	50/60Hz ±5Hz
	Power factor (adjustable)	0.8 ind ~ 0.8 cap	0.8 ind ~ 0.8 cap	0.8 ind ~ 0.8 cap
	THD	<3%	<3%	<3%
	Night time consumption*	<1W	<1W	<1W
Efficiency	Peak efficiency	97.50%	97.50%	97.50%
	Euro efficiency	96.80%	97.00%	96.80%
Information	DC Switch	YES	YES	YES
	Communication port	RS485 / wifi optional	RS485 / wifi optional	RS485 / wifi optional
	Display	LCD 16 characters x 2	LCD 16 characters x 2	LCD 16 characters x 2
Certification		VDE-AR-N 4105	VDE-AR-N 4105	VDE-AR-N 4105
		AS4777	AS4777	AS4777
		AS3100	AS3100	AS3100
		IEC 62109-1/-2	IEC 62109-1/-2	IEC 62109-1/-2
		EN 61000-6-2	EN 61000-6-2	EN 61000-6-2
		EN 61000-6-3	EN 61000-6-3	EN 61000-6-3
General Data	Operating temp. range	-25~60°C	-25~60°C	-25~60°C
	Protection level	IP65	IP65	IP65
	Operating elevation	<2000m	<2000m	<2000m
	Cooling	Natural cooling	Natural cooling	Natural cooling
	Dimension (W x H x D, mm)	475 x 415 x 155	475 x 415 x 155	475 x 415 x 155
	Weight	21kg	21kg	21kg

* Night time consumption includes backlight & communication

- All specifications are subject to change without prior notice.