



Preliminary Technical Information Sheet



KuPower HIGH EFFICIENCY POLY^{GEN 3} MODULE CS3K-275 | 280 | 285P (1000 V / 1500 V)

With Canadian Solar's industry leading black silicon cell technology and the innovative LIC (Low Internal Current) module technology, we are now able to offer our global customers high power poly modules up to 285 W.

The KuPower poly modules with a dimension of 1675 x 992 mm, close to our 60 cell modules, have the following unique features:

- **Higher** power classes for equivalent module sizes
- **High** module efficiency up to 17.15 %
- **LOW** hot spot temperature risk
- **LOW** temperature coefficient (Pmax): -0.39 % / °C
- **LOW** NMOT (Nominal Module Operating Temperature): 43 ± 2 °C



More power output thanks to low NMOT: 43 ± 2 °C



Low power loss in cell connection



Safer: lower hot spot temperature



Heavy snow load up to 5400 Pa, wind load up to 2400 Pa



Low BoS cost with 1500 V_{dc} system voltage



linear power output warranty



product warranty on materials and workmanship

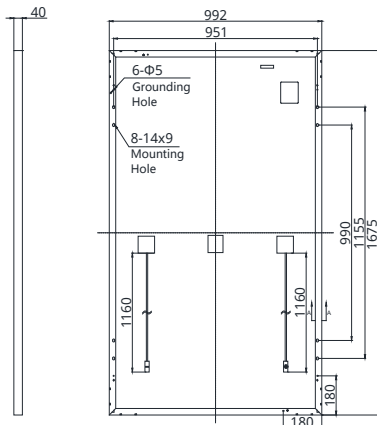
PRODUCT CERTIFICATES*

IEC 61215 / IEC 61730: 2005 & 2016: VDE / CE (Expected by middle of June, 2017)

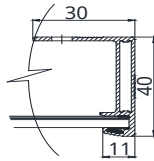
* Please contact your local Canadian Solar sales representative for the specific product certificates applicable in your market.

ENGINEERING DRAWING (mm)

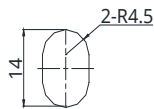
Rear View



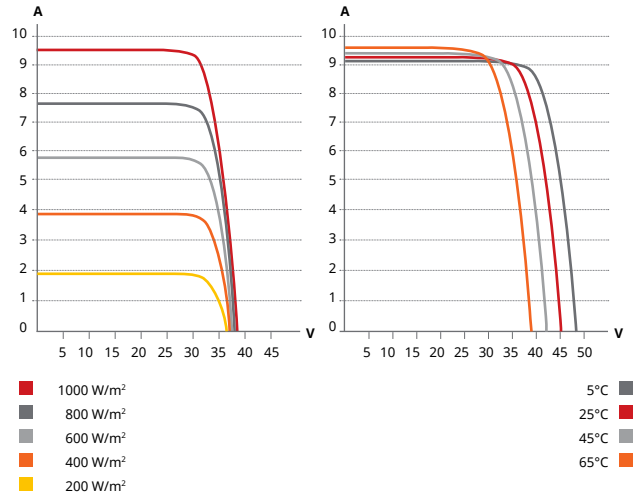
Frame Cross Section A-A



Mounting Hole



CS3K-280P / I-V CURVES



ELECTRICAL DATA | STC*

CS3K	275P	280P	285P
Nominal Max. Power (Pmax)	275 W	280 W	285 W
Opt. Operating Voltage (Vmp)	31.0 V	31.2 V	31.4 V
Opt. Operating Current (Imp)	8.88 A	8.98 A	9.08 A
Open Circuit Voltage (Voc)	37.7 V	37.9 V	38.1 V
Short Circuit Current (Isc)	9.38 A	9.47 A	9.56 A
Module Efficiency	16.55%	16.85%	17.15%
Operating Temperature	-40°C ~ +85°C		
Max. System Voltage	1000 V (IEC / UL) or 1500 V (IEC / UL)		
Module Fire Performance	TYPE 1 (UL 1703) or CLASS C (IEC 61730)		
Max. Series Fuse Rating	30 A		
Application Classification	Class A		
Power Tolerance	0 ~ + 5 W		

* Under Standard Test Conditions (STC) of irradiance of 1000 W/m², spectrum AM 1.5 and cell temperature of 25°C.

ELECTRICAL DATA | NMOT*

CS3K	275P	280P	285P
Nominal Max. Power (Pmax)	200 W	204 W	208 W
Opt. Operating Voltage (Vmp)	28.3 V	28.5 V	28.7 V
Opt. Operating Current (Imp)	7.07 A	7.16 A	7.25 A
Open Circuit Voltage (Voc)	34.9 V	35.1 V	35.3 V
Short Circuit Current (Isc)	7.58 A	7.66 A	7.73 A

* Under Nominal Module Operating Temperature (NMOT), irradiance of 800 W/m², spectrum AM 1.5, ambient temperature 20°C, wind speed 1 m/s.

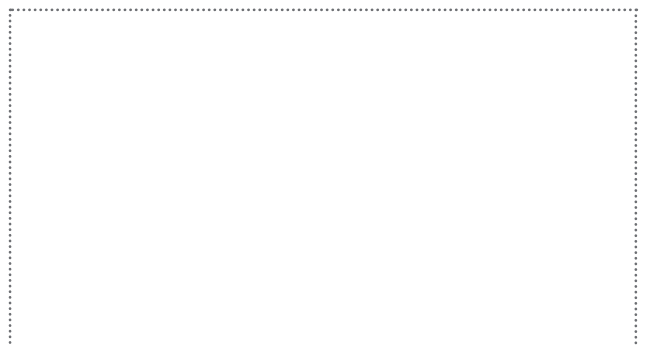
MECHANICAL DATA

Specification	Data
Cell Type	Poly-crystalline, 156 × 78 mm
Cell Arrangement	120 [2 × (10 × 6)]
Dimensions	1675 × 992 × 40 mm (65.9 × 39.1 × 1.57 in)
Weight	18.5 kg (40.8 lbs)
Front Cover	3.2 mm tempered glass
Frame	Anodized aluminium alloy
J-Box	IP68, 3 diodes
Cable	4.0 mm ² & 12 AWG, 1160 mm (45.7 in)
Connector	T4 series or UTX or MC4 series (1500 V), T4 series (1000 V)
Per Pallet	26 pieces
Per Container (40' HQ)	728 pieces

TEMPERATURE CHARACTERISTICS

Specification	Data
Temperature Coefficient (Pmax)	-0.39 % / °C
Temperature Coefficient (Voc)	-0.31 % / °C
Temperature Coefficient (Isc)	0.053 % / °C
Nominal Module Operating Temperature	43±2 °C

PARTNER SECTION



The aforesaid datasheet only provides the general information on Canadian Solar products and, due to the on-going innovation and improvement, please always contact your local Canadian Solar sales representative for the updated information on specifications, key features and certification requirements of Canadian Solar products in your region.

Please be kindly advised that PV modules should be handled and installed by qualified people who have professional skills and please carefully read the safety and installation instructions before using our PV modules.